

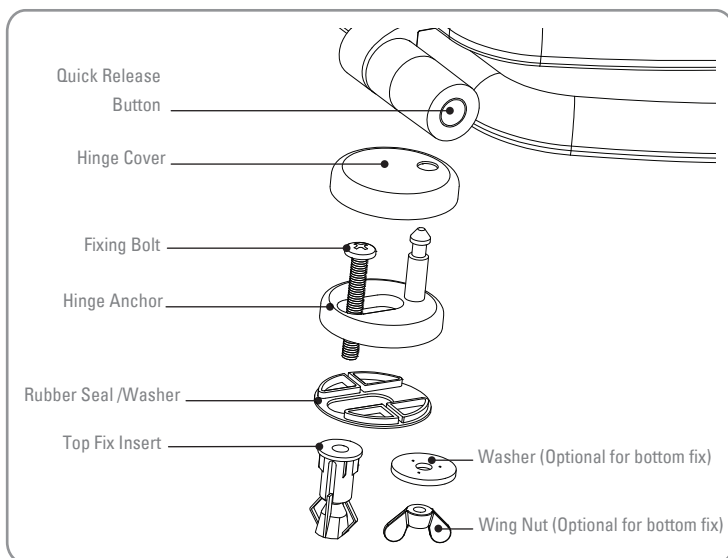
Please read carefully before attempting to fit the seat. If you are not the end user, please make sure the aftercare instructions are made available for the end user to read.

Before final fitting of the seat to the pan, it is essential that the hinge anchors are adjusted correctly and the fixing bolts are firmly tightened. Failure to tighten these bolts will result in the seat working loose over a period of time.

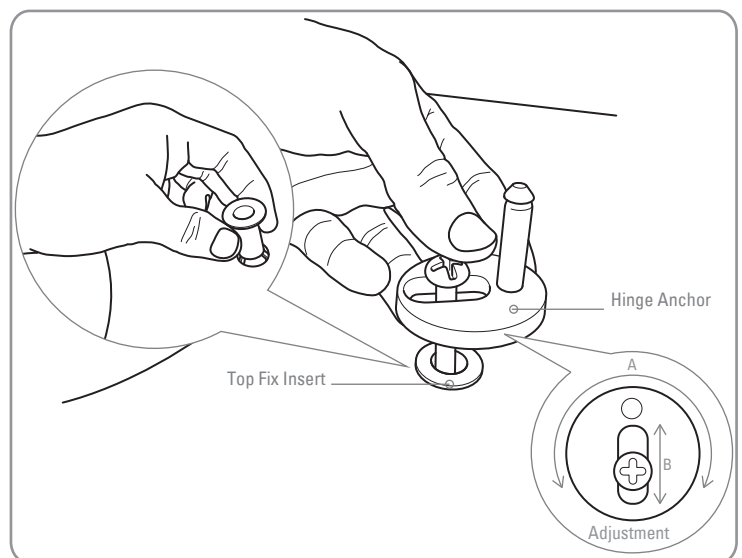
The seat can be fully adjusted (adjustment A) by rotating the hinge anchors about the pins that locate into the quick release bodies of the hinges. Further minor adjustment (B) is possible by sliding the screw in the slot of the hinge anchor (shown below).

Note that two extra plastic coated washers and wing nuts are supplied where access to the underside of the pan is possible for an alternative method of fixing the seat. These are used instead of the top fix insert (see parts diagram).

PARTS DIAGRAM



ANCHOR FIXING & ADJUSTMENT



1. Fix the top fix inserts into the seat holes in the top of the toilet pan.
2. Fit the rubber seals/washers in to the base of the hinge anchors and place the fixing bolts through the slot as shown.
3. Begin to tighten the bolts until the hinge anchors are loosely secured to allow for adjustment of the seat on the pan.
4. Align and insert the pins of the hinge anchors into the sockets in the chrome hinge barrels and press the seat firmly down until you hear it 'click' into position.
5. Adjust the hinge anchors to make sure the seat lines up with the edges of the toilet pan. When you are satisfied that the seat is in the correct position, remove the seat from the hinge anchors by pressing in the buttons on both hinge barrels simultaneously. Lift the seat vertically off, taking care that the hinge anchors remain in the desired position.
6. Fully tighten the screws into the top fix insert. Place the cover plates over the hinge anchors and re-click the seat into position.



Clean surfaces with a soft damp cloth and mild soap solution



Do not scrub or scour



Do not use abrasive cleaning agents



Do not stand on the lid or ring of your toilet seat